

Close to midnight: Monday
March 28th 2005 11:09:37pm

A Magnitude 8.7 Earthquake

Rocked the entire Nias Islands

Hit everything down...

Then pouring series of

"smaller" ones

MAGNITUDE 8.7 EARTHQUAKE
11:09:37 PM AT EPICENTER 11:09:37 PM
DATE: MONDAY, MARCH 28TH 2005
LOCATION: 1.054N, 97.415E
DEPTH: 33 KM



FACTS

Posko **Delasiga Cinta Anak Bangsa**

Gunung Sitoli, the capital city
- Centre of the economy
for the entire islands
Collapsed



Updates as per April 15th 2005:

647 Died
6,687 Injured
230,360 Refugees

207 Government's Buildings
741 Schools
89 Bridges
all broken or collapsed

1,349 Churches
42 Mosques
1 Buddhist Temple
all collapsed

13,923 Houses Collapsed
23,606 Houses Badly Broken
137 Shop Houses Collapsed

Some sub-districts are not completely reported yet.

Source: SATKORLAK PBP SUMUT

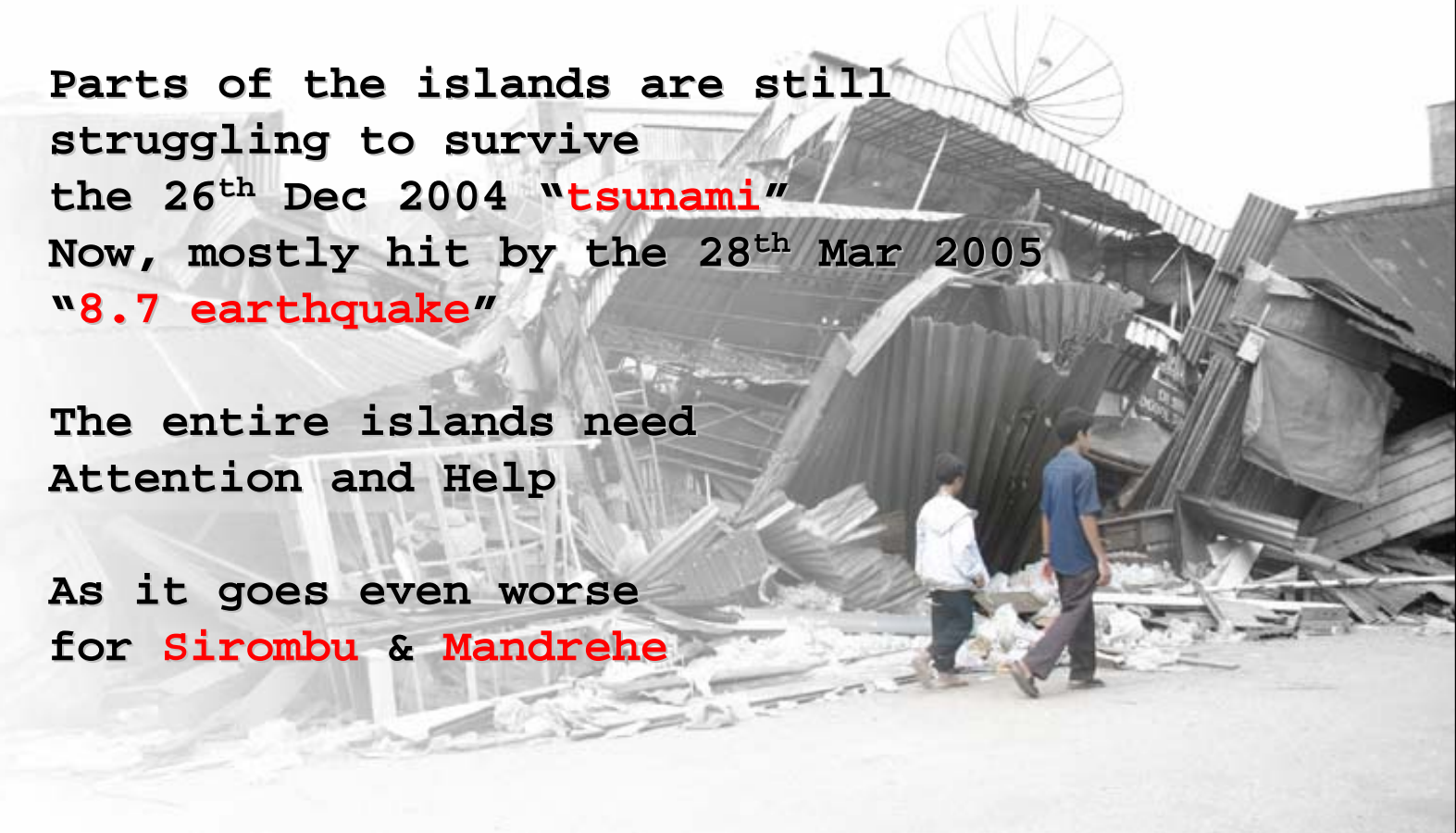


WALKING OUT OF *-the not too bad-* YESTERDAYS

Parts of the islands are still
struggling to survive
the 26th Dec 2004 "tsunami"
Now, mostly hit by the 28th Mar 2005
"8.7 earthquake"

The entire islands need
Attention and Help

As it goes even worse
for Sirombu & Mandrehe






Roads cracked, **bridges** lifted up



Distributions affected,
Villagers easily run out of supplies



The "**tsunami**" **Sirombu** & **Mandrehe**
Are really getting into
deeper pain and harder time
ahead...



In Sirombu
The main seaport and fish market
in the west coast:

The sea leaves the **fishery harbor** alone...
...**coast line** drawn back
approx. 100m away

Corals come out of the sea
and get burned by the sun

Sea level dropped by more than 2m

Jetty lost its arm

Sirombu seaport,
The **main one** for the west coast
becomes **practically useless**



posko d'cab

Hinako seaport



Emergency **shelter**
for the family, built
right in front of
their **collapsed** house



Fear of further disasters
push the villagers to live
in **tents** away from home
Some even left the islands





posko  cab

SCHOOLS

57 in Mandrehe

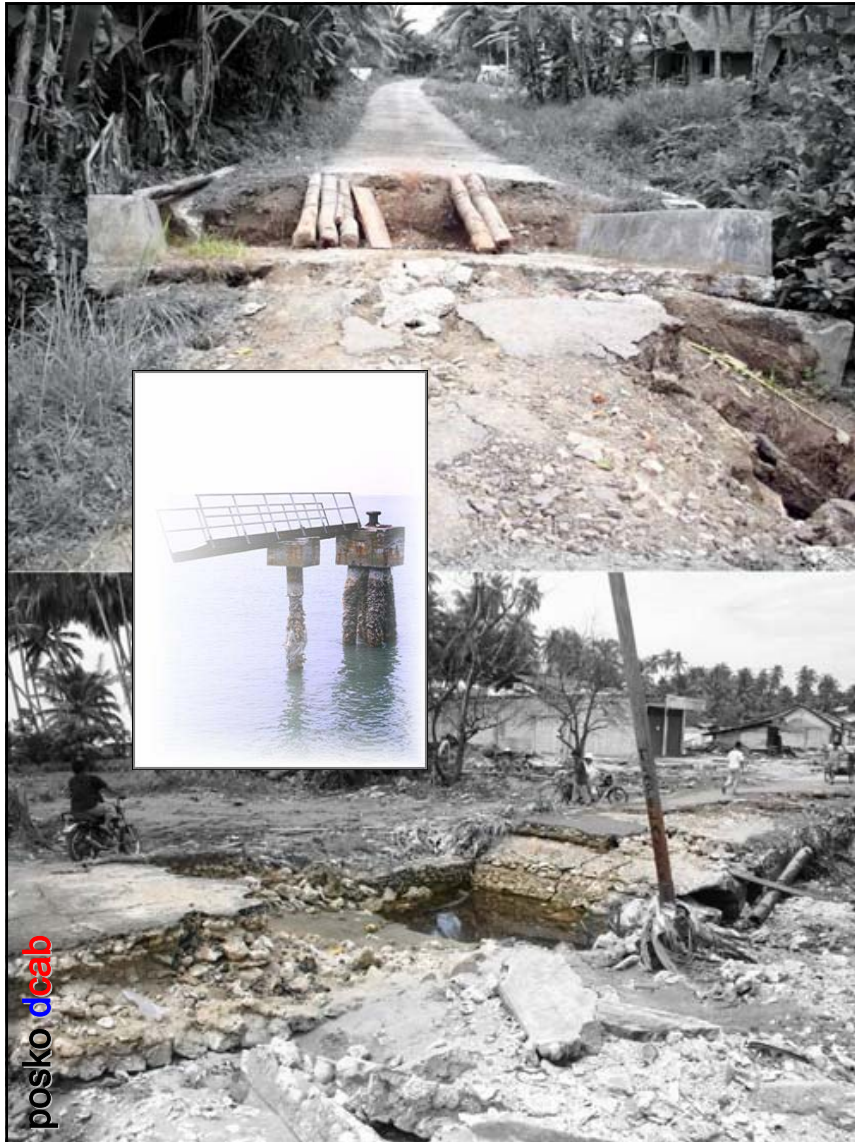
31 in Sirombu

were hit and collapsed.

Mostly are
Primary Schools, whose
students were generally
out of standard school
kits, books, ...and
qualified teachers

Tsunami took some books
and uniforms,

Earthquake just made a
perfect loss...



posko d'cab

INFRASTRUCTURES

A massive **economic loss** by any consideration, specially for the remote Sirombu and Mandrehe

At least **5 bridges** broken down or lifted up, **2 jetties** at 2 seaports: Sirombu and Hinako become useless, **1 government building** also down.

The **Hinako Villagers** surely get the worst..



Hinako Islands

1,500 villagers of 12 villages in 8 islands suffering from the side effect of Tsunami:

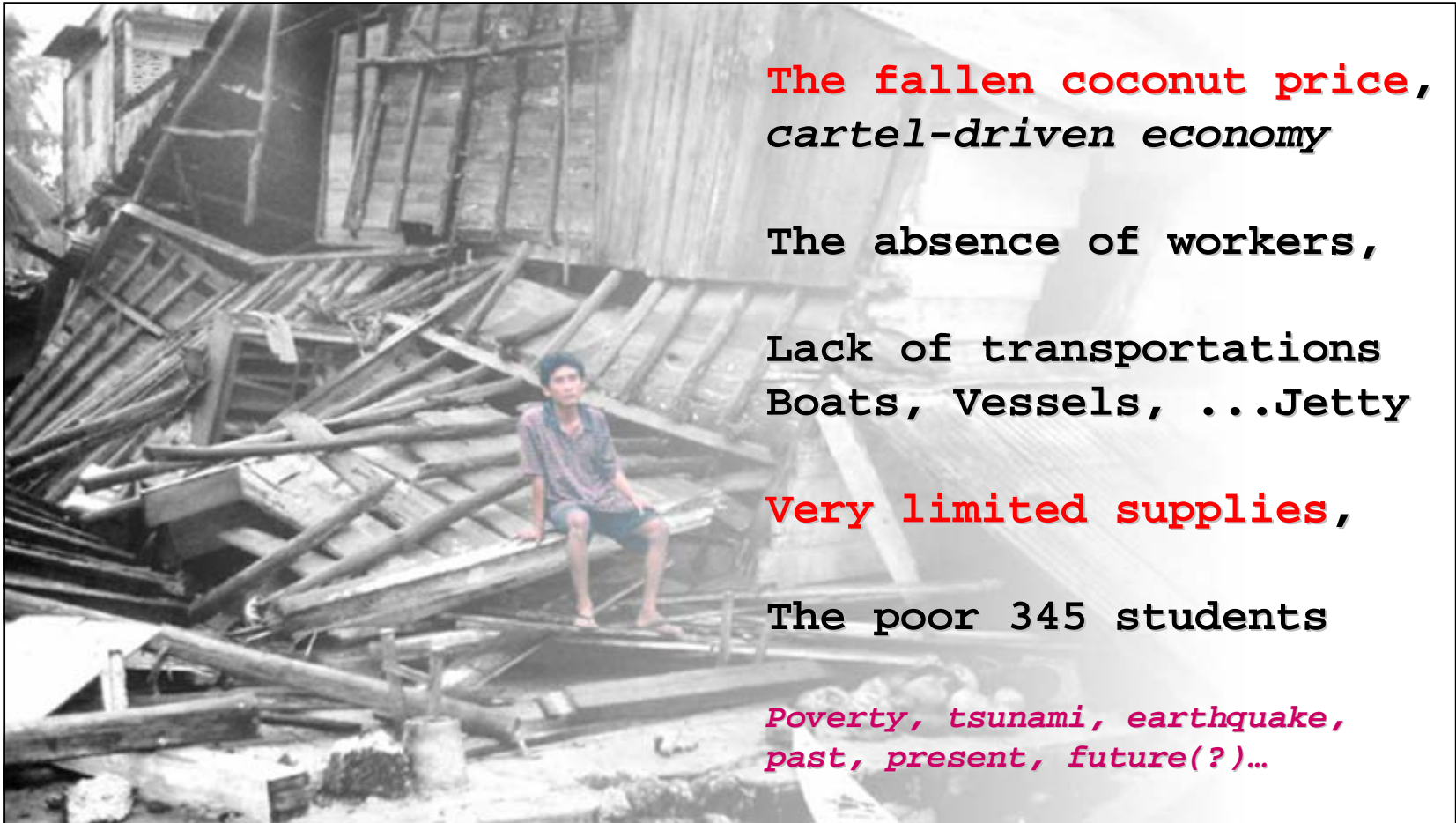
Loss of Market and Supplies

Now, Earthquake left "Dry Beach" with coral barricades and the broken jetty,

get closer to perfect isolation

...and more villagers fled the islands

They may have seen bitter time ahead...



*The fallen coconut price,
cartel-driven economy*

The absence of workers,

Lack of transportations

Boats, Vessels, ...Jetty

Very limited supplies,

The poor 345 students

*Poverty, tsunami, earthquake,
past, present, future(?)...*

TOO EXHAUSTED TO COPE WITH...



posko dcab

Peace in the Past

Hinako, 2 weeks+ after



So much need, so much help needed

EMERGENCY NEEDS

For Daily Home Living :

1. Rice and Fresh Water
2. Hygienic Kits
3. Kerosene
4. Medicine & Vitamin
5. Tents
6. Lanterns / Kerosene Lamps

For The Community :

1. Diesel Generators
2. Deep Well Pumps
3. Water Tanks
4. 8GWT Boat



MAGNITUDE 8.7 EARTH QUAKE
TIME AT EPICENTER 11:08:27 PM
DATE: MONDAY, MARCH 28TH 2011
LOCATION: LAMPUNG, 51° 41' 00" E

The map shows the Indonesian archipelago with concentric circles representing the radius of the earthquake's impact. The epicenter is marked with a red circle and labeled 'H'. Other islands like SIMEULEU and NIAS are also labeled. A scale bar indicates 100 KM.



December 26th 2004
Tsunami took also life
of "Tauna" the owner

posko dcab

March 28th 2005
8.7 Earthquake
Really took all

