

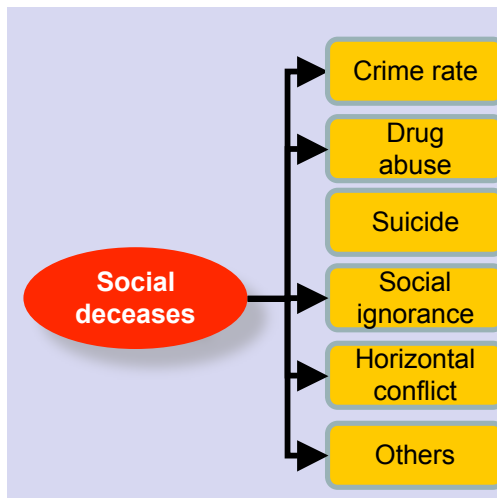
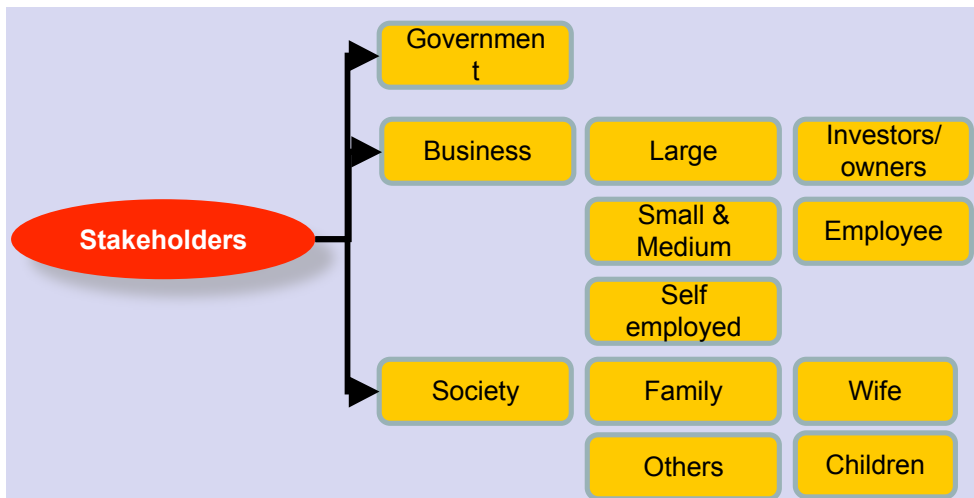
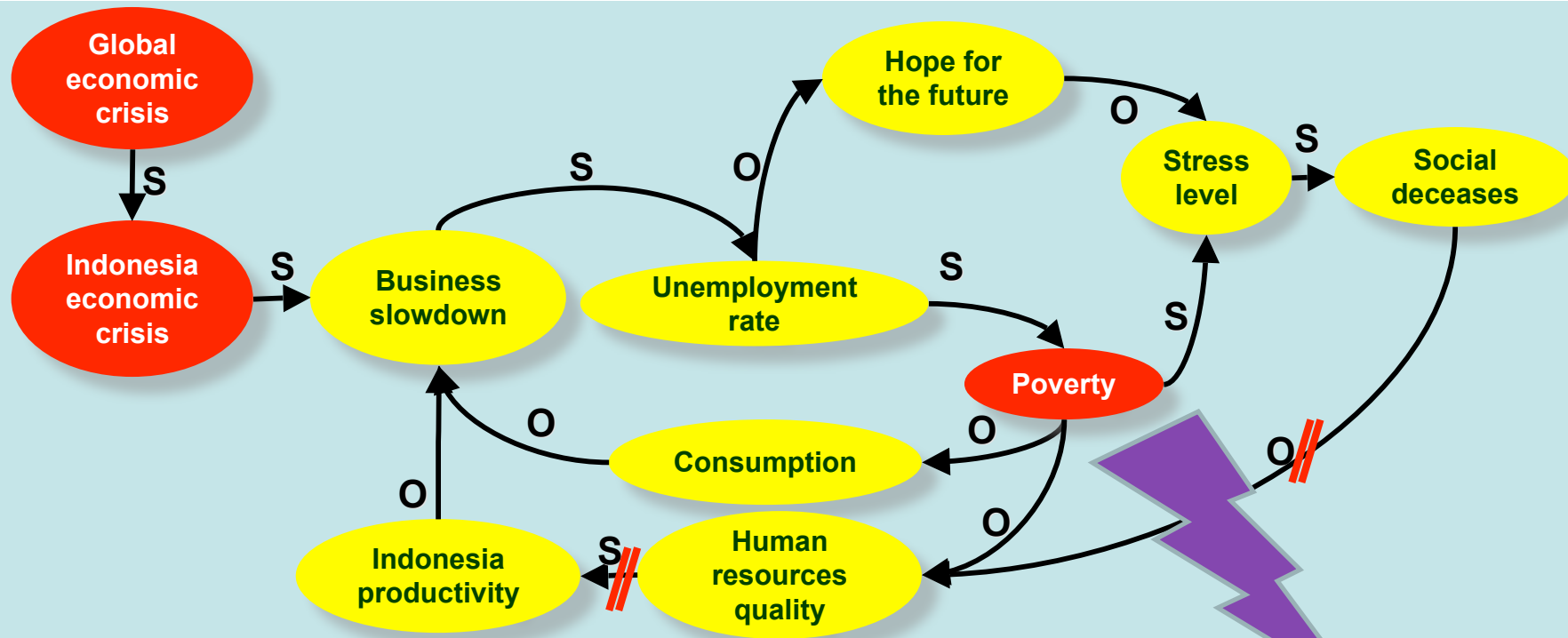
# Prototype: Sustainable Business Development

**Group member:**

*Edwin Hidayat Abdullah*  
*Gumilar Rusliwa Somantri*  
*Yohanes Surya*  
*Triarko Nurlambang*  
*Rachmat Susetyo*  
*Priscilia Suntoso*

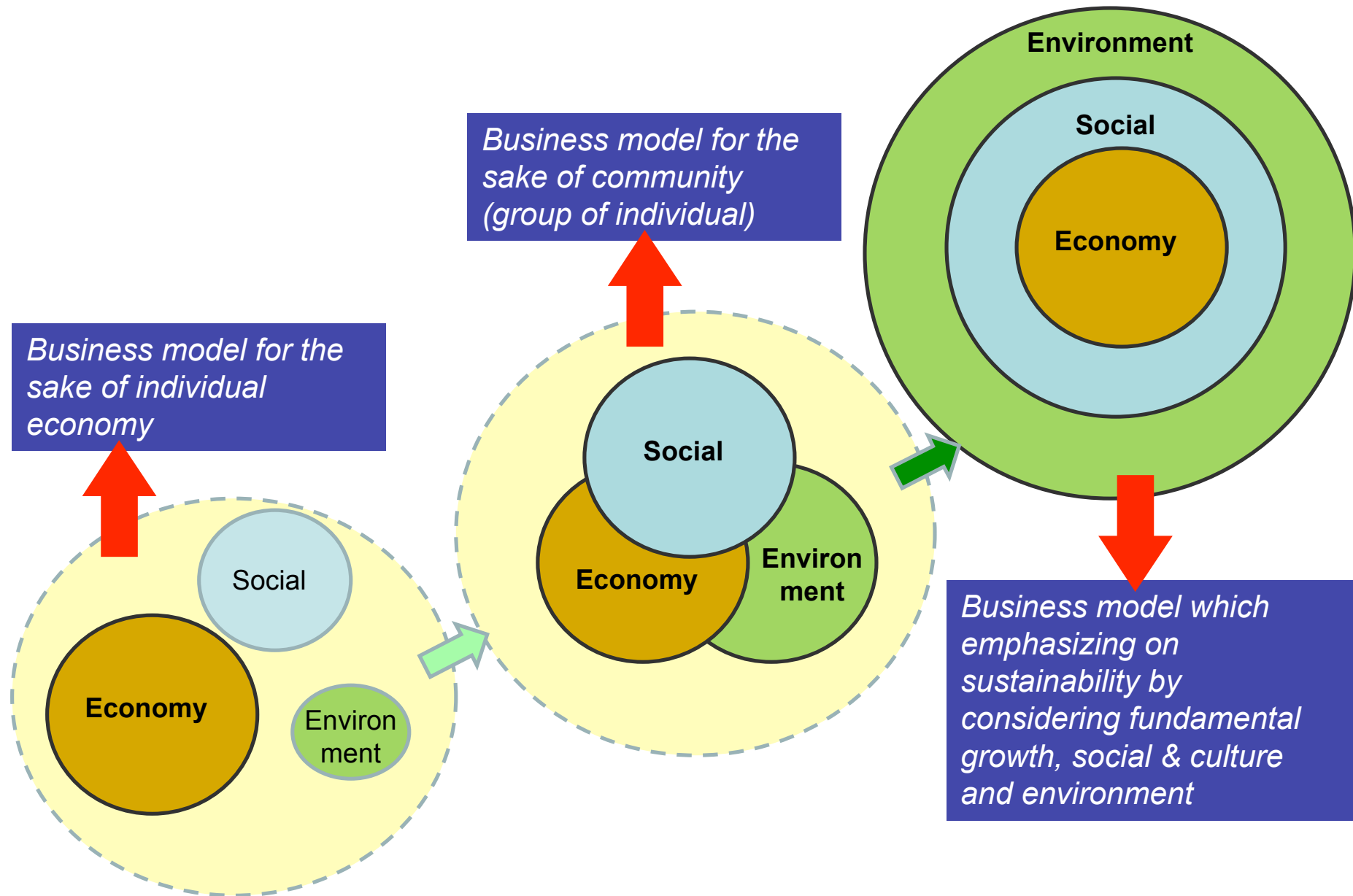
**IDEAS 2008-2009**

# Archetype analysis



It is obvious for us that **POVERTY** is the worst intermediate impact which can cause whole system to collapse.

# Business Development Road Map



WARUNG BAKSO OBAMA 108



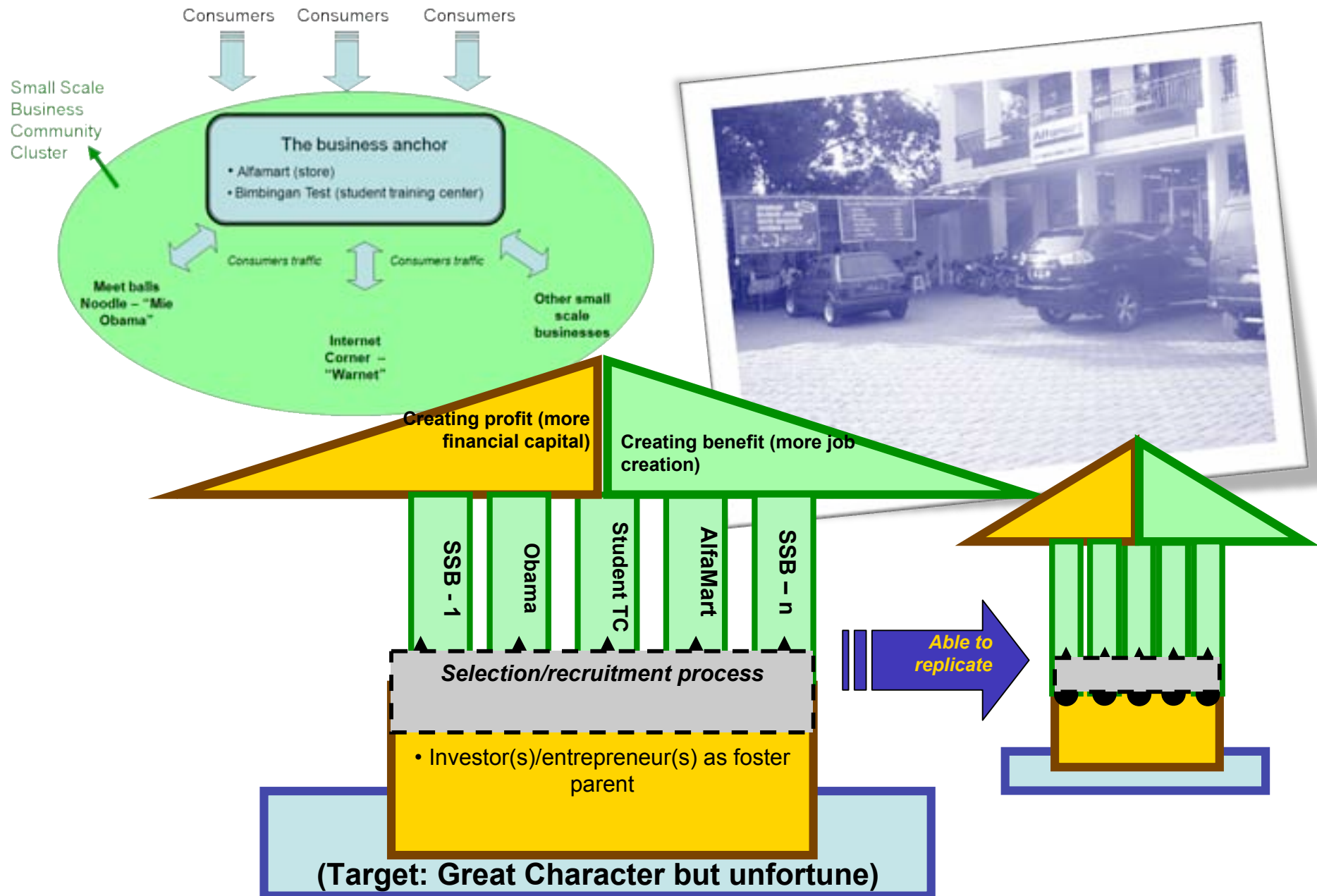
## Business:

Meat ball and noodles

## Cooperation Structure:

Revenue sharing and ijarah  
(sell and lease back)

# Community: Business Scheme



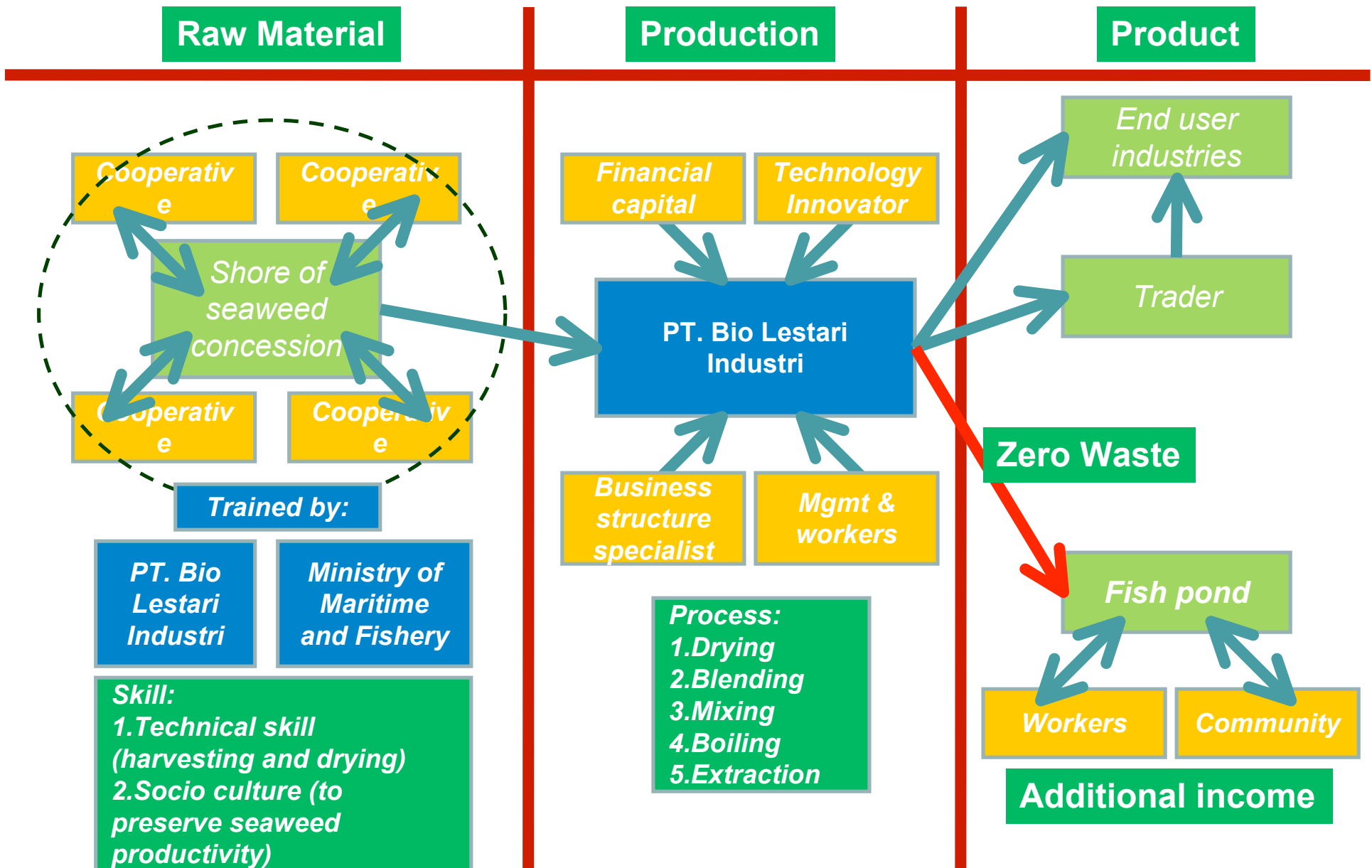
## Seaweed Garut - Pameungpeuk:



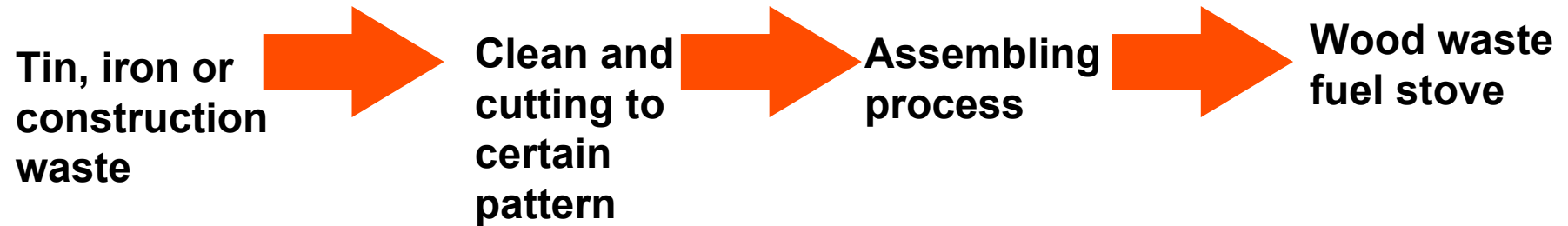
**Sodium  
alginate**

- Textile printing
- Food
- Immobilized biocatalysts
- Pharmaceutical & medical uses
- Paper
- Welding rods
- Binders for fish feed
- Release agents

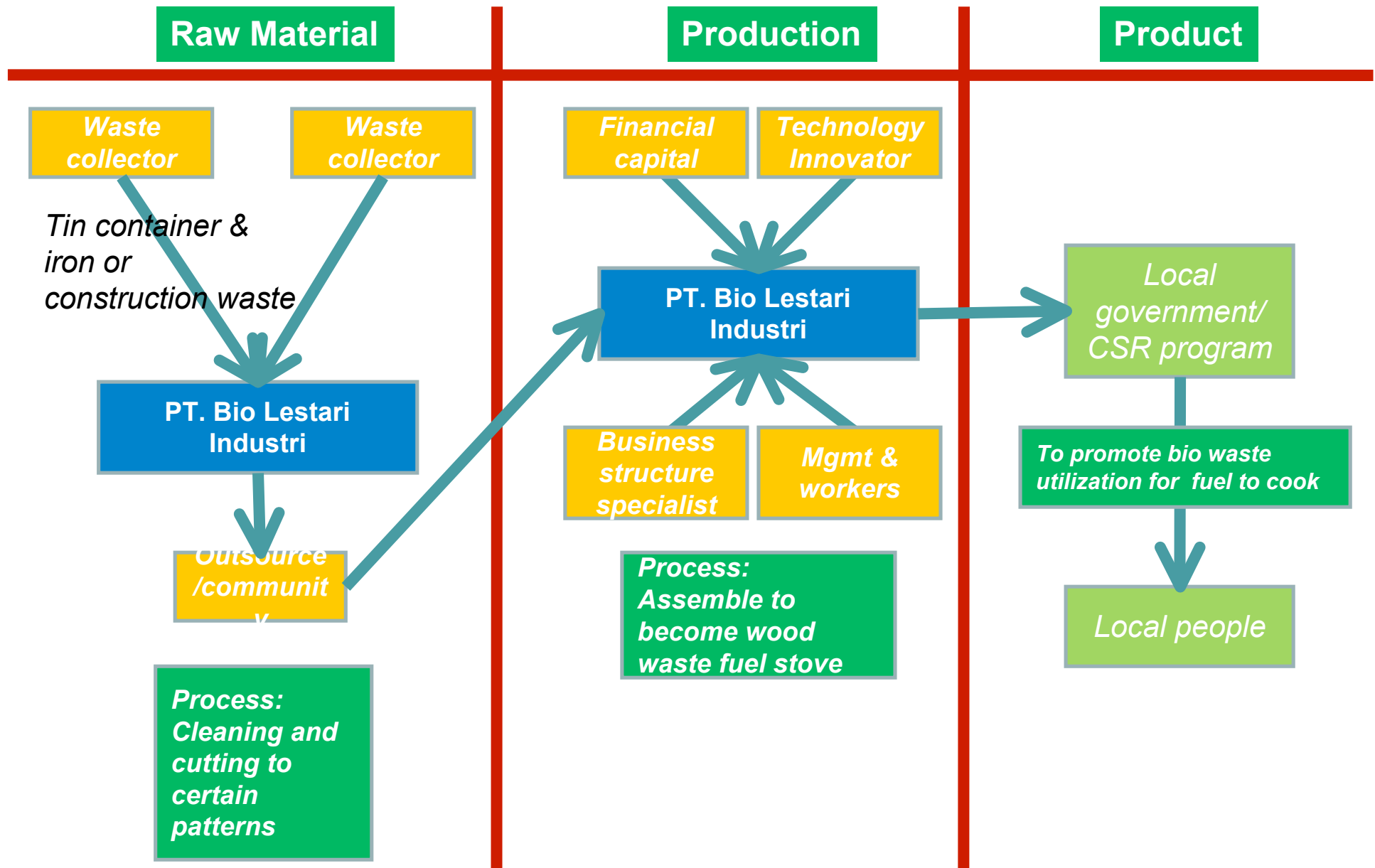
# Business Structure



## Wood waste fuel stove:



# Business Structure



# The Key Ideas Behind

- **Creating jobs**
- **Social entrepreneur**
- **Sustainable business**



# Main Findings

- **Business realities.**
- **Family does matters.**
- **Keep the “fire” and motivation.**
- **Business to be explored.**
- **Strong commitment**



# Learning Points

- **Cross sector collaboration:**
  - **Creativities and fresh ideas.**
- **The integration of head, heart and hands:**
  - **Inspiration and aspiration.**
- **Stakeholders engagement and system change:**
  - **Listen to their aspiration.**



**The End**